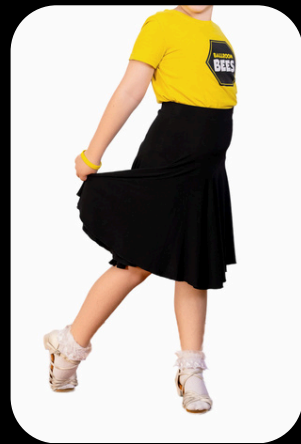


Girls



Acceptable

- TUCKED IN YELLOW BALLROOMBEES SHIRT WITH BALLROOMBEES LATIN SKIRT OR BALLROOMBEES TUTU ONLY
- MUST BE PAIRED WITH BLACK JAZZ SHOES, BLACK BALLET SHOES OR LATIN SHOES ONLY

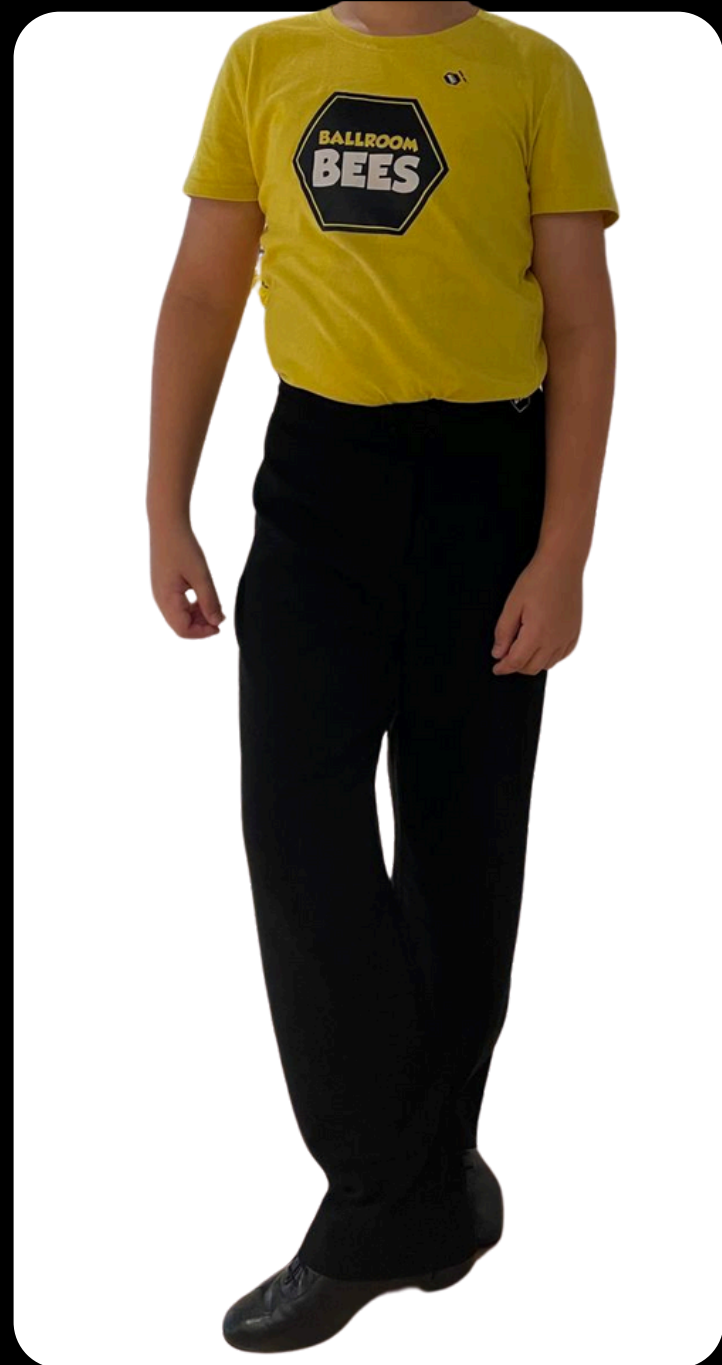
Yes

- BALLROOMBEES BLACK BODYSUIT WITH LATIN SKIRT (YELLOW/BLACK) OR BALLROOMBEES TUTU
- MUST BE PAIRED WITH BLACK JAZZ SHOES, BLACK BALLET SHOES OR LATIN SHOES
- WHITE SOCKS WITH FRILLS ONLY

No

- NO SNEAKERS
- NO BEIGE JAZZ SHOES
- NO PINK BALLET SHOES
- NO PANTS
- NON-BALLROOMBEES TUTU
- NON-BALLROOMBEES BODYSUIT W LEGGINGS
- NO COLORED SOCKS

Boys



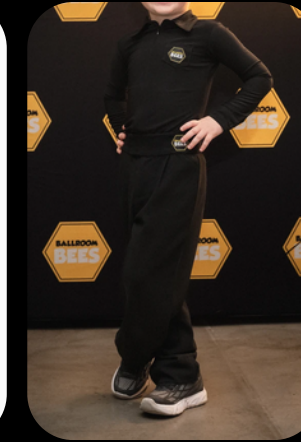
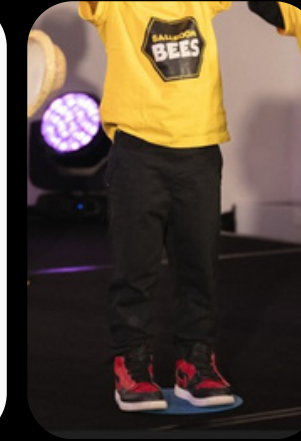
Acceptable

- TUCKED IN YELLOW BALLROOMBEES SHIRT WITH BALLROOMBEES TROUSERS
- PAIRED WITH BLACK JAZZ SHOES OR BLACK BALLET SHOES



Yes

- BLACK BALLROOMBEES SHIRT & BALLROOMBEES TROUSERS
- BLACK JAZZ SHOES OR BLACK BALLET SHOES



No

- NO SNEAKERS
- NO BEIGE JAZZ SHOES
- NO PINK BALLET SHOES
- NO NON-BALLROOMBEES TROUSERS
- NO SHORTS
- NO COLORED SOCKS